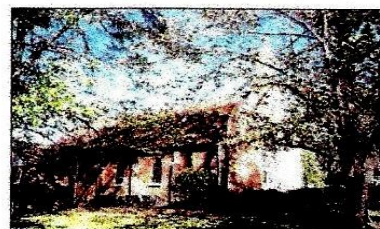




St. John Baptiste de LaSalle Catholic Church

***275 C.C. Wright School Road
North Wilkesboro NC 28659-9103
336-838-5562***



St. Stephen Catholic Church

***101 Hawthorne Road
Elkin NC 28621-3016
336-835-3007
Email: connect@ststephennnc.org
Website: www.ststephennnc.org***

Fr. John D. Hanic

704-763-2475

Rev. Mr. Harold Markle

336-466-4173

Sister Janis McQuade, S.S.J.

336-835-4542

Mr. Cuauhdemoc (Temoc) Herrejon

828-773-2353

St. John

***Sabrina Caudill 336-957-1295 Bookkeeper
Mary Buran, Karen Huffman Music Ministry
Peggy Mill, Anne Stone RCIA
Garcia Ocompo Youth Ministry
Mary Sorel Faith Formation***

St. Stephen

***Julie Colglazier 336-353-8222 Bookkeeper
Theresa Martin Music Ministry
Patrick Colglazier Youth Ministry
Peggy Reikowsky Youth Ministry
Phillip Parrish RCIA***

Worship Times

Saturday Vigil Mass, 4:00p

Sunday Mass, 11:15a, En español, 1:30p

Daily Mass, Holy Days Consult Bulletin

Sacrament of Reconciliation Saturdays, 3:00-4:00p

Sunday Mass, 9:00a

Holy Days 7:00p

Communion Service Consult bulletin

Sacrament of Reconciliation By appointment

Welcome, New Parishioners

We are a Stewardship Community, sharing our time, talent, and treasure, in the most life-giving ways possible. Parishioners are expected to participate in weekly worship, in our community life, and in our service among our dear neighbors.

Sacramental Life ~ Baptism, Confirmation, Eucharist, Matrimony

For Sacrament preparation, you must be a registered, active member and attend preparation sessions.

Rite of Christian Initiation of Adults (RCIA)

For those who desire to explore the Catholic Faith, spirituality, customs, and practices.

Anointing of the Sick

For those with chronic illness or who are pre-surgery, contact Father John or Sister Janis

Twenty-Eighth Sunday in Ordinary Time

October 13, 2019

Face Time

It used to be a societal norm to look at someone when in a conversation with them. It's unlikely that a person can be trusted if they can't look you in the eyes. Somehow, we have lost our desire or ability to look others in the eyes, to genuinely be present to them and to open to their presence.

Stopping to be present, to look another in the eyes, takes time and intention. Why do you avoid genuine face time? Is it based on your fear of an honest encounter, or perhaps someone may reveal your true self to you? Or is it a selfishness that your time is more precious than of the one who wants to speak with you?

It would be a gnarly experience to look at Naaman or the Ten Lepers. The visual horror of their appearance would naturally make your eyes divert away. Their disease has exploded inside out. Their sores are sickening to see. Their disease makes them outcasts in all venues of society. They can't go home or to Temple, and they have no say in any political decisions. No one will look them in the eyes. They are The Excluded, The Unwelcome Outsiders.

Medically, leprosy is cured with medications. *Spiritually*, excluding others from your heart is cured only when you are healed of your *dis-ease* with yourself. When you are ill-at-ease, leprous from the inside out, you disabled your ability to see others as Christ does. By averting your eyes you miss the astounding, grace of a genuine face time encounter of Christ in others.

The Incarnation of Christ is the ultimate Face Time with humanity. His encounters with others were *always radical*:

Not only did he look The Excluded in the eyes, he touched, embraced, and healed them!

Inclusive love is radical. It requires face time.

Be a healing presence in any and all situations. Be open and powerless in the presence of The Excluded.

Be radical: Be the face of Christ for others. Be inclusive love.

LIFE. FAMILY. PARISH. MAKE THEM BETTER.

God's blessings.

spanis



*Are you gratefully running
towards Jesus or away from him?*

☞ Sunday Scriptures

Habakkuk 1:2-3.2:2-4	2Tim. 1:6-8.13-14
Ps 95: 1-2. 6-9	Luke 17:5-10

☞ Reflecting & Acting on the Word _____

*When are you aware of your own dis-ease
in the presence of someone
who seems different from you?*

*What is the "leprosy" that alienates you from being fully
present to family parish, God's Neighborhood?*

☞ October Intentions

13 +Lorraine Mroczenski, sister of Lila Keller,
r/b Ladies' Guild
+Mona Schaufenbuel, r/b Jerry



27th Sunday Ordinary Time ~ October 20

Acolyte	Gabby, Maddox
Proclaimers	Michael, Jerry
Altar Linens	Zenaida Anayeli
EMs	MARY B, AILEEN; Ellen & Richard
Greeter/ Ushers	Bob, Jerry

Welcome, "Jet" Martinez

Born September 16, 2019
6 lbs 8 oz. 19.5"

son of Cindy & Ozzie Martinez,
Blessings & Congratulations!




OCTOBER	
13	28th Sun OT CLOW FAMILY FAITH FORMATION 10:30-11:45
14	SSJA Christian Growth Group
15	SSJ Founder's Day, 1650 Communion Service, 12:15p; SSJAs, 7:00p, FLC
16	Choir, 7:00p; RCIA Inquiry, 7:15p
20	29th Sun OT CLOW; FFF 10:30-11:45a CommUNITY Picnic , Elkin Park, 1-4:00p
21	Ladies' Guild, 7p Give Blood Elkin Rescue Squad, 1:30-6:00p
22	Communion Service, 12:15p
23	Choir, 7:00p; RCIA Inquiry, 7:15p
27	30th Sun OT CLOW; FFF 10:30-11:45a Baptism: Liam Lopez
29	Communion Service, 12:15p
30	Choir, 7:00p; RCIA Inquiry, 7:15p
NOVEMBER	
01	ALL SAINTS DAY, Mass, 7p
02	ALL SOULS DAY / Día de Muertos
17	RCIA Rite of Welcome



The Sisters of St. Joseph ~ Maxim 61


*Seek union with God and
let that pure love transform you.*

- I make time for personal prayer.*
- I ask to be transformed.*
- I let Earth teach me the mystery of transformation.*




I AM THE VINE

You are the branches



☐ I have forgotten my envelope.
☐ I am a visitor.
☐ I don't have envelopes but would like some.
☐ I would like the Pastor to call on me.

Household Name _____
Donation for _____
Phone _____ \$ _____ Amount _____



© Copyright 1999 Creative Communications for the Parish, Fenton, MO. PEA

Tri-C Donations Store brands are best.

OCTOBER

Dish Soap

Thank You very much for your generosity!



Birthdays & Anniversaries

14 Raquel Barrientos

18 Athena Spicer
Betty Villarreal

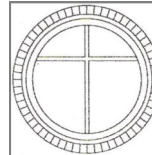


22 Ty Keller

Ruben Ramirez
25 Beth Altemueller
26 Ramona Doyle



25 Samantha & Andrew Ange



**November 1 ~ Feast of All Saints
Mass 7:00p**

In honor of the Saints, each household is asked to bring canned veggies for Tri-C



2020 Mass Intentions

To schedule a Mass for a deceased loved one, an anniversary, a loved one's birthday, or a special intention, use the **WHITE MASS INTENTION ENVELOPES** posted on the lobby bulletin board.

Clearly print the name and the intention on the front, insert the stipend of ten dollars.

Use checks made payable to Fr. John or cash.

Give the envelope to S. Janis.

SEPTEMBER Stewardship ~ Giving Out of Gratitude ~

Have
you
made
your
gift
to
DSA
yet?

Sunday	\$5852.00
Monthly Expenses (5 wks)	10100.00
Under	- 2341.00
Administration	1713.00
Poor Box	301.00
Endowment Fund	485.00
(In memory of Mona or Bob)	
Bahama Relief	140

ENVELOPES

The amount of loose checks increased in our collection making recording your donation more unnecessarily tedious for the tellers.

If you **have envelopes**, please use them.

If you **want envelopes**, please sign up for them in the lobby.

If you're **not using envelopes**, your check must be placed in the envelope shown, with **your name**, the **name of the collection**, (Sunday, Endowment, Admin, Missions, etc.) and the amount.

These envelopes are found in the lobby.

Starting today, we are eliminating loose checks by only using this envelope or the boxed envelopes provided for registered parishioners.